

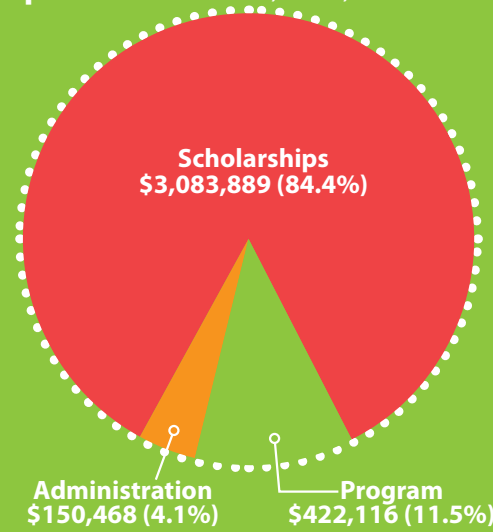
## Participants by County (n=2,540)

Alachua	37	Dixie	1	Hillsborough	201	Marion	31	Putnam	14
Baker	2	Duval	116	Holmes	2	Martin	21	Santa Rosa	8
Bay	15	Escambia	27	Indian River	25	Miami-Dade	316	Sarasota	71
Bradford	11	Flagler	3	Jackson	8	Monroe	17	Seminole	43
Brevard	54	Franklin	1	Jefferson	7	Nassau	7	St. Johns	20
Broward	293	Gadsden	4	Lafayette	1	Okaloosa	32	St. Lucie	82
Calhoun	1	Gilchrist	1	Lake	37	Okeechobee	35	Sumter	3
Charlotte	24	Gulf	12	Lee	66	Orange	76	Suwannee	4
Citrus	25	Hamilton	4	Leon	58	Osceola	10	Taylor	1
Clay	16	Hardee	28	Levy	4	Palm Beach	132	Union	8
Collier	53	Hendry	47	Liberty	2	Pasco	48	Volusia	28
Columbia	8	Hernando	32	Madison	16	Pinellas	80	Wakulla	1
Desoto	2	Highlands	9	Manatee	20	Polk	161	Walton	8
								Washington	10

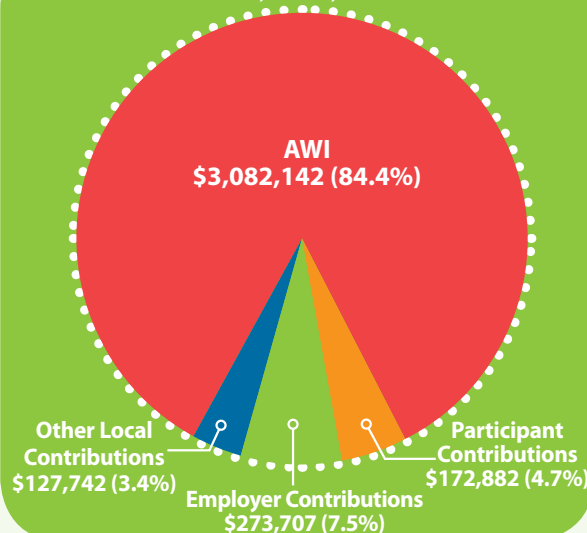


## Financial Report

Expenditures: \$3,656,473



Revenues: \$3,656,473



## 2010-2011 Funders

- AWI Office of Early Learning
- The Children's Trust

## Professional Development Advisory Council

**Brittany Birken**  
Florida Children's Services Council

**Judy Burleson**  
Redlands Christian  
Migrant Association

**Lilli Copp**  
Florida Head Start  
State Collaboration Office

**Gabriele DiTota**  
Accredited Professional Preschool  
Learning Environment (APPLE)

**Suzanne Gellens**  
Florida Association for the  
Education of Young Children

**Alisa Ghazvini**  
Early Childhood Consultant

**Stuart Greenberg**  
Just Read, Florida!  
Florida Department of Education

**Katherine Gopie**  
Prime Time Palm Beach County, Inc.

**Kathy Haight**  
Palm Beach State College

**Linda Hood**  
Kids World of Chipley

**Stacy Howard**  
Agency for Workforce Innovation  
Office of Early Learning

**Ellen McKinley**  
Child Development  
Education Alliance

**Peggy Roanne Moreno**  
Palm Beach State College

**Larry Pintacuda**  
Florida Afterschool Network

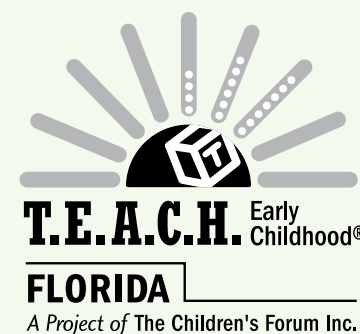
**Deborah Russo**  
Department of Children  
and Families

**Barbara (Saunders) Sims**  
CCB Communications  
Management Center

**Kathryn Stuckey**  
Florida Community College  
Department of Social and  
Behavioral Sciences

**Tammy Tener**  
Florida Family Child Care  
Home Association, Inc.

**K. Lee Tirpak**  
Early Learning Coalition  
of Broward County, Inc.



The **Florida T.E.A.C.H. Early Childhood® Scholarship Program** is licensed by the **Child Care Services Association** in Chapel Hill, NC. The Children's Forum in Tallahassee is the licensee for the State of Florida. The Forum administers funding for the program under a contract with the **Florida Office of Early Learning** and **private contributors** as listed. We appreciate the financial support of our partners to improve the professional development of early childhood educators that ultimately benefits young children in Florida.



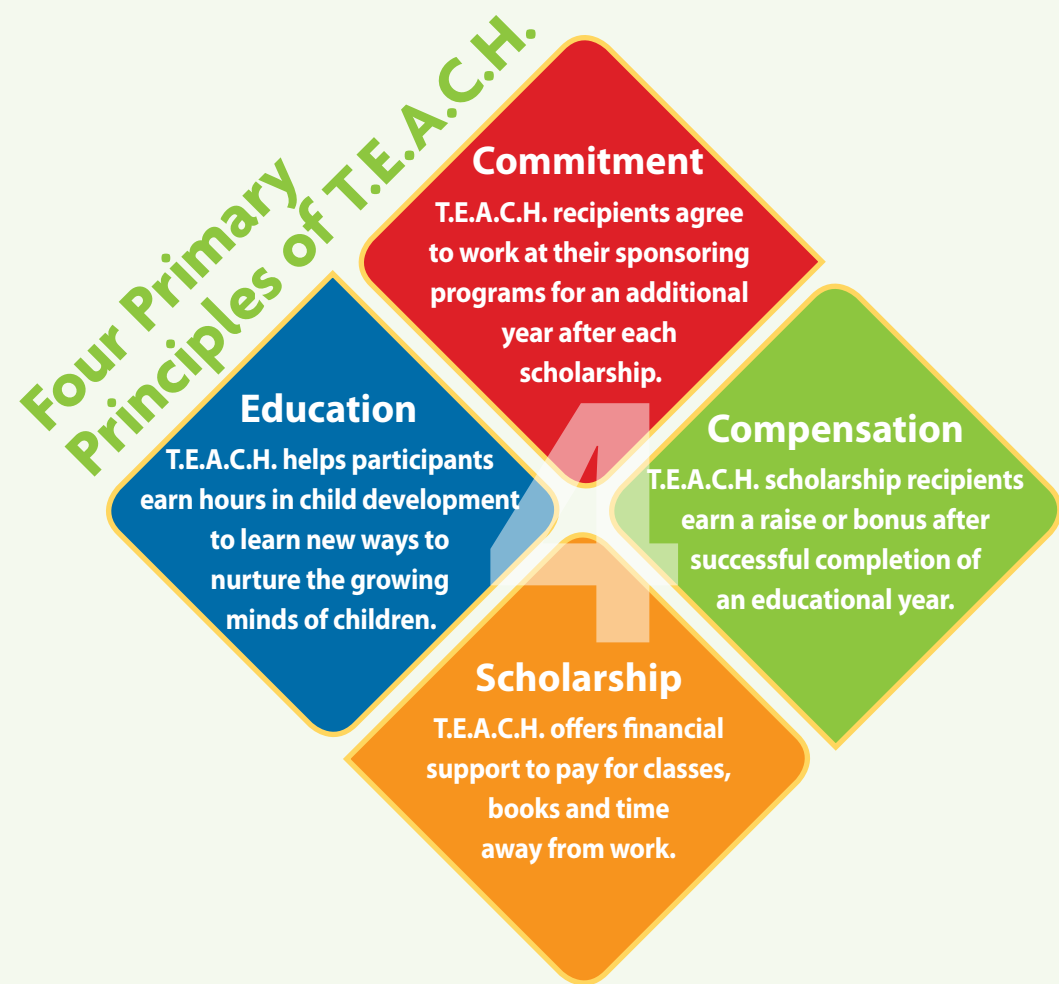
For more information regarding the **Florida T.E.A.C.H. Early Childhood® Scholarship Program** please contact the Children's Forum at 877-FL-TEACH (358-3224) or visit [www.teach-fl.com](http://www.teach-fl.com)

The T.E.A.C.H. Annual Report was produced at \$0.56 per copy.



# T.E.A.C.H. Early Childhood® Florida

## 2010-2011 Annual Report



## T.E.A.C.H. Outcome Measures

The T.E.A.C.H. Florida program staff evaluates the scholarship components of education, compensation and retention on an annual basis. The following shows the average outcomes for Associate and Bachelor degree participants. In order to employ valid statistical sampling for the three areas being measured, we have included figures from 2005 through 2010.

### Increased Education

The following number of credits was earned by recipients:

- 14 credits earned after one completed scholarship contract
- 27 credits earned after two completed scholarship contracts
- 39 credits earned after three completed scholarship contracts

### Increased Compensation

Scholarship recipients in the sample group have realized:

- 9% increase in earnings after one completed scholarship contract
- 18% increase in earnings after two completed scholarship contracts
- 27% increase in earning after three completed scholarship contracts

### Reduced Turnover

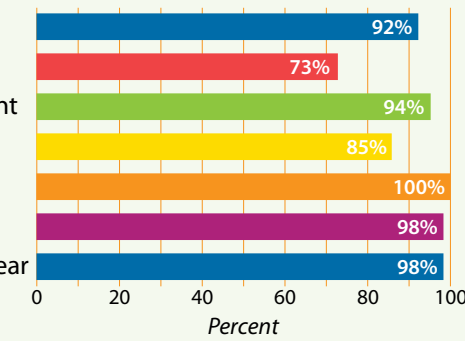
Scholarship recipients had a low turnover rate of:

- 8% turnover after one completed scholarship contract
- 6% turnover after two completed scholarship contracts
- 4% turnover after three completed scholarship contracts

## Center Evaluation Responses

All centers are sent evaluations at the end of each contract. The responses from the past year show that centers:

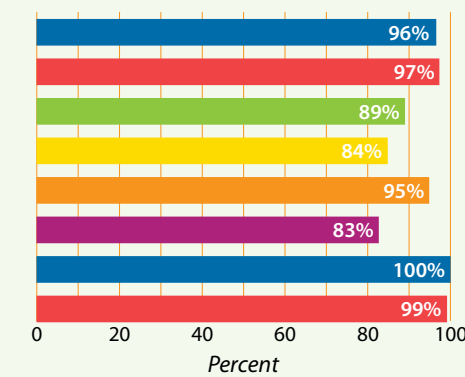
- felt their share of the cost of tuition to be about right
- found giving three hours of release time to be difficult
- found giving three hours of release time to be important
- found awarding a raise/bonus to be very important
- found the Florida Children's Forum to be supportive
- stated they would recommend T.E.A.C.H. to others
- saw positive changes in sponsored teachers this past year



## Recipient Evaluation Responses

All recipients are sent evaluations at the end of each contract. The responses from the past year show that recipients:

- found their share of the cost of tuition to be about right
- found assistance in paying for books to be very important
- found three hours of release time to be about right
- found three hours of release time to be very important
- found receiving a bonus or raise to be very important
- found their child care center to be very supportive
- found the Florida Children's Forum to be supportive
- recommend this type of scholarship program to others



## Participants by Training Institution (n=2,540)

Bradford Union Area Vocational Tech Center	4	Florida League of Christian Schools	3	Pasco-Hernando Community College	11
Brevard Community College	42	Florida State College at Jacksonville	94	Pensacola Junior College	14
Brewster Technical Center	1	Gulf Coast Community College	20	Pinellas Technical Education Center	12
Broward College	111	Hillsborough Community College	49	Polk State College	146
Central Florida Institute of Training	9	Indian River State College	127	Rasmussen College	3
Charlotte County Vocational Technical Center	1	Jose Maria Vargas University	17	Santa Fe College	33
Child Care SW Florida	21	Lake Technical Center	1	Sarasota County Technical Institute	22
Child Development Education Alliance (CDEA)	195	Lake-Sumter Community College	16	Seminole State College of Florida	29
ChildCare Education Institute	234	Leary Vocational/Technical School	5	Sheridan Vocational Technical Center	1
Childhood Development Services	21	Locklin Technical Center	1	Smart Horizons Institute	18
Chipola College	9	Lorenzo Walker Technical Institute	1	South Florida Community College	37
College of Central Florida	18	Maitland Montessori School	2	South Florida Literacy Institute Inc.	18
Council for Professional Recognition	257	Marchman Technical Education Center	2	South Florida Montessori Education Center	1
Daytona State College	6	Miami-Dade College	210	Southwest Florida College	7
Edison State College	82	North Florida Community College	7	St. Johns River Community College	11
Family Central	44	Northwest Florida State College	32	St. Petersburg College	76
Flagler Adult Education Center	1	Nova Southeastern University - Broward	14	State College of Florida, Manatee-Sarasota	62
Florida Gateway College	48	Nova Southeastern University - Tampa	1	Summit Montessori Teacher Training Inst.	1
Florida International University	15	Orlando Tech	3	Tallahassee Community College	222
Florida Keys Community College	4	Palm Beach State College	76	Valencia Community College	7
				Wesley House	5

As a **TEACH** recipient, I have

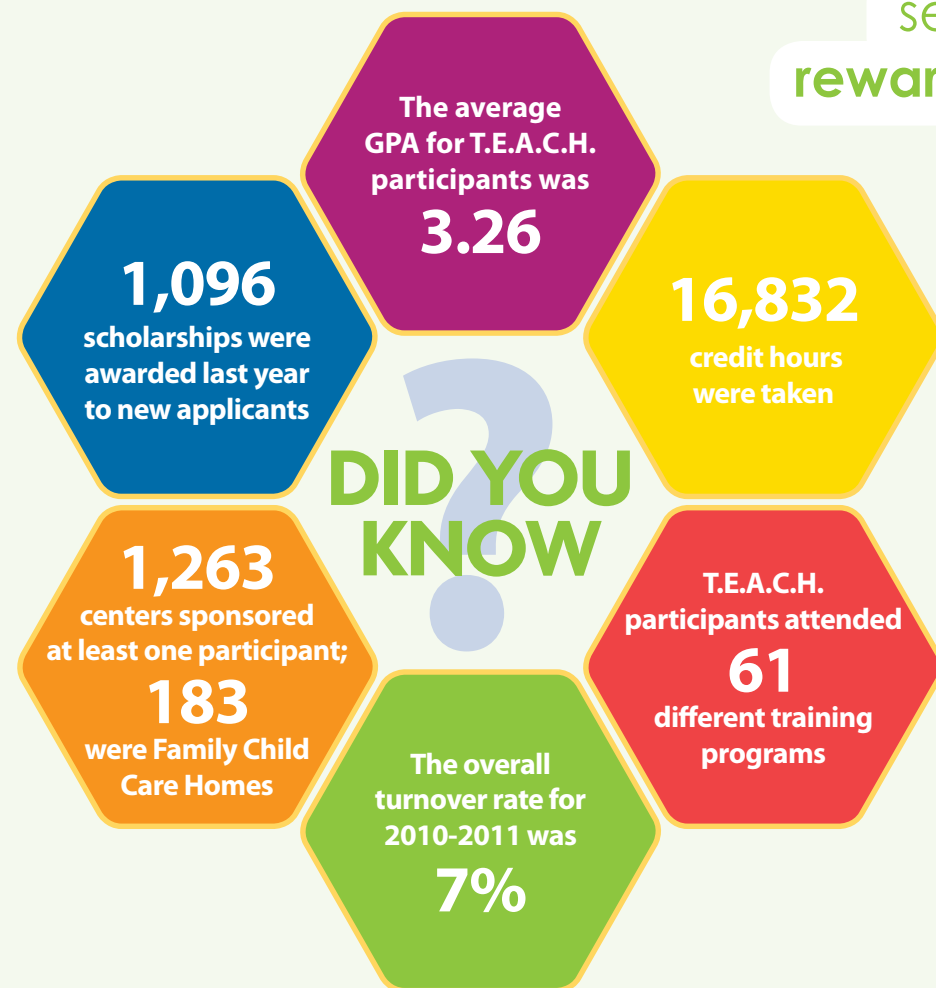
seen both **personal and professional growth** within myself. It is very **rewarding to have a team** (personally known and unknown) supporting my decision to further my education.

This program **offers teachers a chance to a brighter future.** It encourages and inspires us to keep going to **be the best for our children and families.** ~ *Kenyatta Jelks*

## What is T.E.A.C.H.?

### Teacher Education And Compensation Helps

T.E.A.C.H. is a comprehensive scholarship program that provides the early childhood workforce with access to educational opportunities. By promoting higher education, the program is helping to establish a well-qualified, fairly compensated and stable workforce for Florida's children. T.E.A.C.H. provides scholarships for early childhood practitioners to work toward an Associate or Bachelor Degree in early childhood education, a Florida Staff Credential or a Florida Director Credential.



## T.E.A.C.H. Demographics of Participants (n=2,540)

